

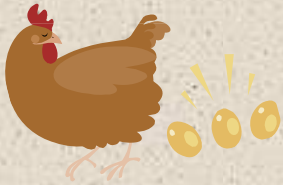
# Whole Farm Subscription

- Do you want to have more purchasing power but don't have room for storage?
- Do you want to save \$500-\$800?
- Do you run out of grass fed and pastured meats between deliveries?
- Would a regular delivery of food in larger quantities suit your schedule?

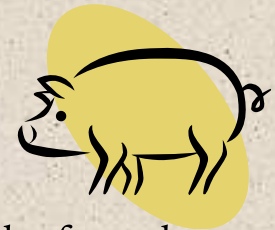


*We have the answer.....*

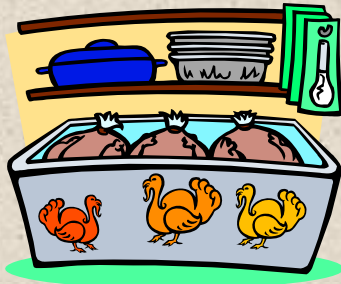
➤ We are looking for families who are interested in buying bulk but who thought it may be out of reach because of lack of storage. We are introducing our whole farm subscription in order to better serve the needs of our customers.



## What you would receive?



- Each family would receive a monthly delivery of meat, eggs, and other goodies from the farm that we may have available (honey, maple syrup and such)
- You would receive a new chest freezer at no cost large enough to hold your foods as they are being consumed throughout the year
- This freezer would be yours after the second year of paid subscription. At the end of the year, the monthly deliveries would total 1 whole beef, 1 whole pig, 20 chickens, 2 turkeys, some deli meats, a dozen eggs per week



# Benefits for you!

- ✓ A well stocked freezer means a supply of excellent quality grass fed and pastured meats available all the time
- ✓ You would save more than \$800 over our retail prices
- ✓ VIP access to extra chickens and other specials we may have at various times throughout the year
- ✓ After 2 years, you would own the freezer at no cost
- ✓ Invitation to a subscriber bbq and fun weekend on the farm every summer
- ✓ Equal monthly payment easy to fit into household budget
- ✓ No need to place regular orders, everything would already be done
- ✓ Save yourself from potential cost of food increases



# Benefits for us!



- This method helps us match our animal numbers to our customers' yearly needs
- Keeps our deliveries at a regular volume
- Keeps our cash flow steady
- Allows us to improve our customer service for you, as we can focus more time on helping you, and less time packing smaller individual orders
- Helps us reach our goal of having more of our eaters using whole animals
- Allows us more time to add enterprises on the farm we would like to explore (cheese making, maple syrup, winemaking, honeybees)
- Allows us more freedom to spend time with our family out of the meat shop



# How does it work?



This month, we would receive 12 cheques from you for \$300 each, dated for each month until April of 2012. You will receive a freezer, eggs, and a little enticer order to begin the process. Beginning in June, you will receive a monthly meat package (see schedule next page) with 4 dozen eggs for the month. If so desired, we can add extras (rabbits, extra eggs/month, extra chickens) to your package for an extra monthly cost, but at a significant cost saving to you. The monthly delivery will take place as it does now, at our regular delivery locations and times identified on our website. We will deliver the freezer to your home. After your second year of paid subscription, the freezer belongs to you.

Your yearly subscription will total a whole beef, whole pig, 20 chickens, 2 turkeys and 10 lbs of deli meats throughout the year.

# Delivery schedule

- May 2011-freezer, eggs, and enticer order
- June 2011- ¼ beef, eggs
- July 2011- ¼ pig, eggs
- August 2011- ¼ beef, eggs
- September 2011- 10 chickens 1 turkey, 5 lbs deli meat, eggs
- October 2011- ¼ pig, eggs
- November 2011- 10 chickens, 1 turkey, eggs
- December 2011- ¼ beef, eggs
- Jan 2012- ¼ pig, eggs
- Feb 2012- ¼ beef, eggs
- March 2012- ¼ pig, eggs
- April 2012- eggs



Yah, but will I save money?



## Yes! These are your cost savings!

- 1 whole hog 220 lbs retail (by the cut) ~ \$775
- 1 whole beef 550 lbs retail ~ \$2500-\$2600
- 20 chickens x \$18 = \$360
- 52 dozen eggs x \$4 = \$208
- 2 turkeys x \$50 = \$100
- 10 lbs deli meat x \$12/lb = \$120
- \$50 enticer order
- Freezer \$400
- Total = \$4613
- You pay \$3600
- You save \$1013.00



Yes it's that good!

**For more info or to subscribe**



Contact us by email or phone

[harborsidefarms@gmail.com](mailto:harborsidefarms@gmail.com)

(204)825-2465